

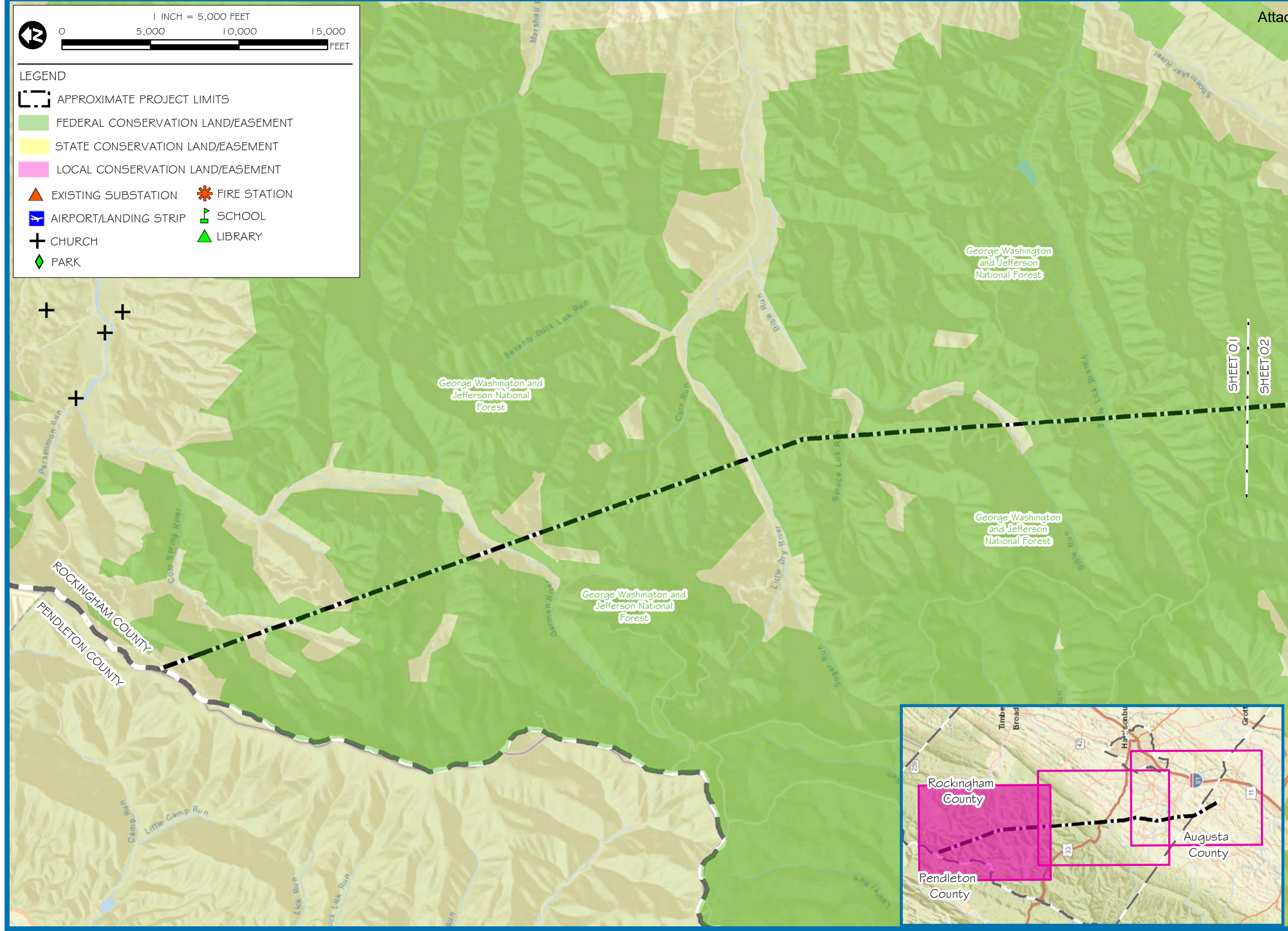


CORPORATE | 5020 MONTROSE BLVD., SUITE 650 HOUSTON, TX 77066
 P: 713.520.5400
 WWW.ORES.US

1 INCH = 5,000 FEET

LEGEND

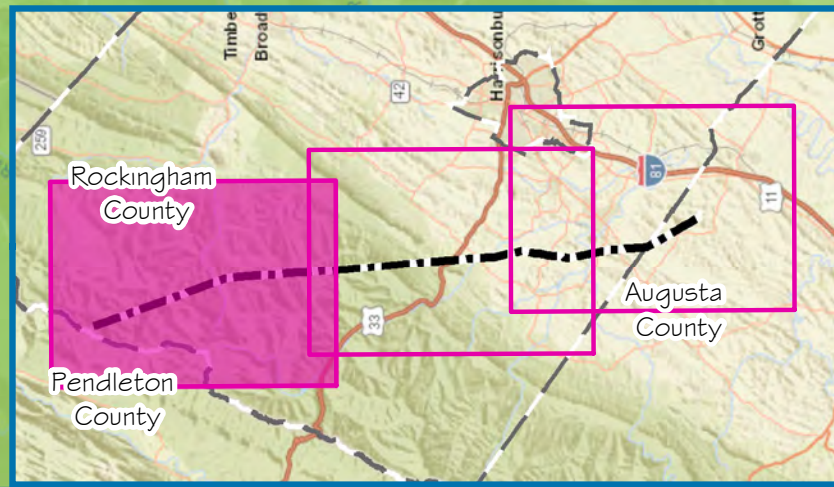
- APPROXIMATE PROJECT LIMITS
- FEDERAL CONSERVATION LAND/EASEMENT
- STATE CONSERVATION LAND/EASEMENT
- LOCAL CONSERVATION LAND/EASEMENT
- EXISTING SUBSTATION
- FIRE STATION
- AIRPORT/LANDING STRIP
- SCHOOL
- CHURCH
- LIBRARY
- PARK



SHEET 01
 SHEET 02

PROJECT: TL 550
 APPLICANT: DOMINION
 ENVIRONMENTAL CONSTRAINTS MAP
 II.A.2
 ROCKINGHAM AND AUGUSTA
 COUNTIES, VIRGINIA

SHEET 01



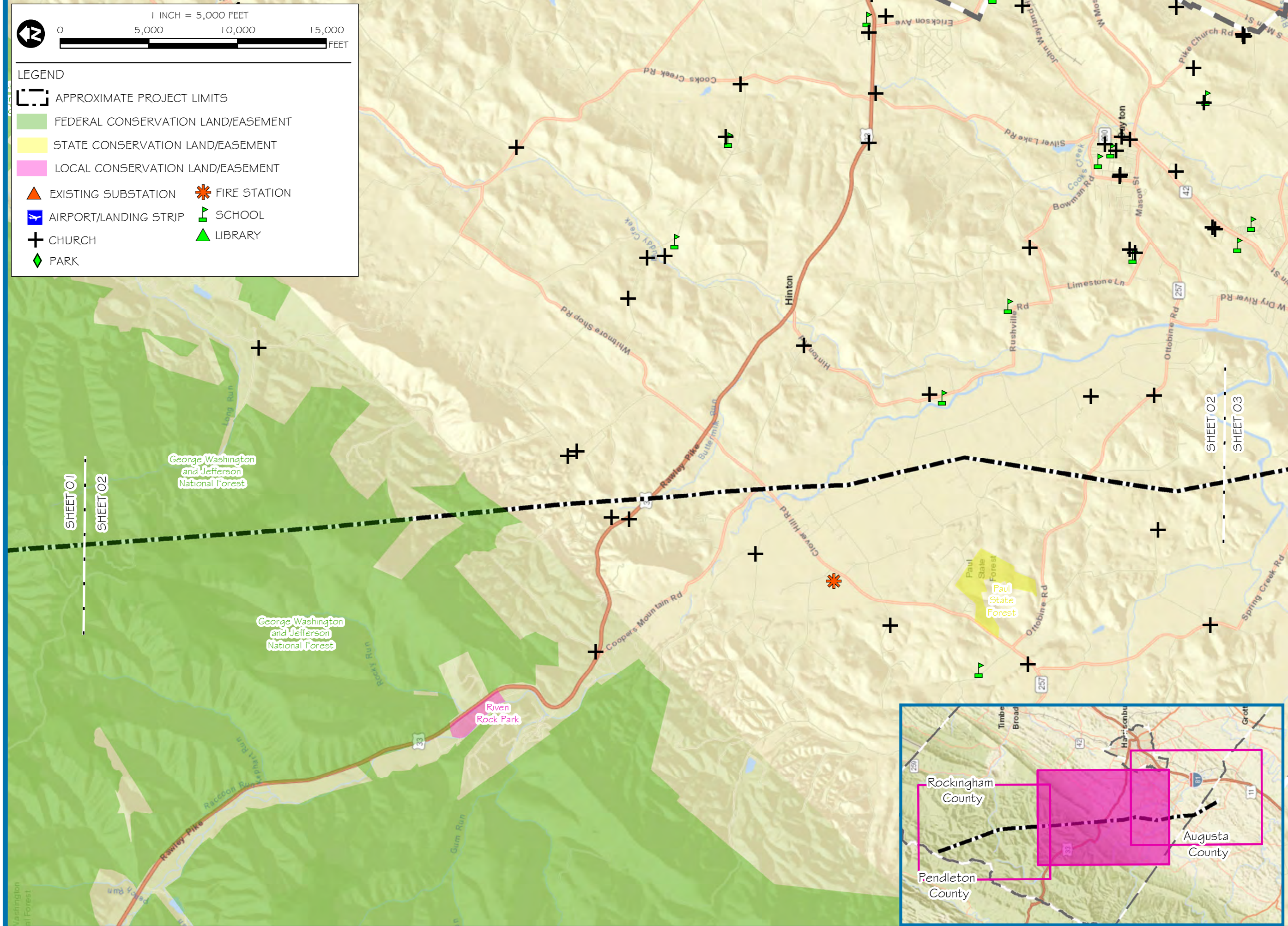
PROJECT MANAGER:	TL
DRAWN:	TB
JOB NUMBER:	564148
DATE EXPORTED:	07/27/2018
REVISIONS:	NONE

1 INCH = 5,000 FEET

0 5,000 10,000 15,000 FEET

LEGEND

- APPROXIMATE PROJECT LIMITS
- FEDERAL CONSERVATION LAND/EASEMENT
- STATE CONSERVATION LAND/EASEMENT
- LOCAL CONSERVATION LAND/EASEMENT
- EXISTING SUBSTATION
- AIRPORT/LANDING STRIP
- CHURCH
- PARK
- FIRE STATION
- SCHOOL
- LIBRARY



CORPORATE | 5020 MONROSE BLVD., SUITE 650 HOUSTON, TX 77066
 P: 713.520.5400
 WWW.ORES.US

PROJECT: TL 550
 APPLICANT: DOMINION
 ENVIRONMENTAL CONSTRAINTS MAP
 II.A.2
 ROCKINGHAM AND AUGUSTA
 COUNTIES, VIRGINIA

SHEET 02

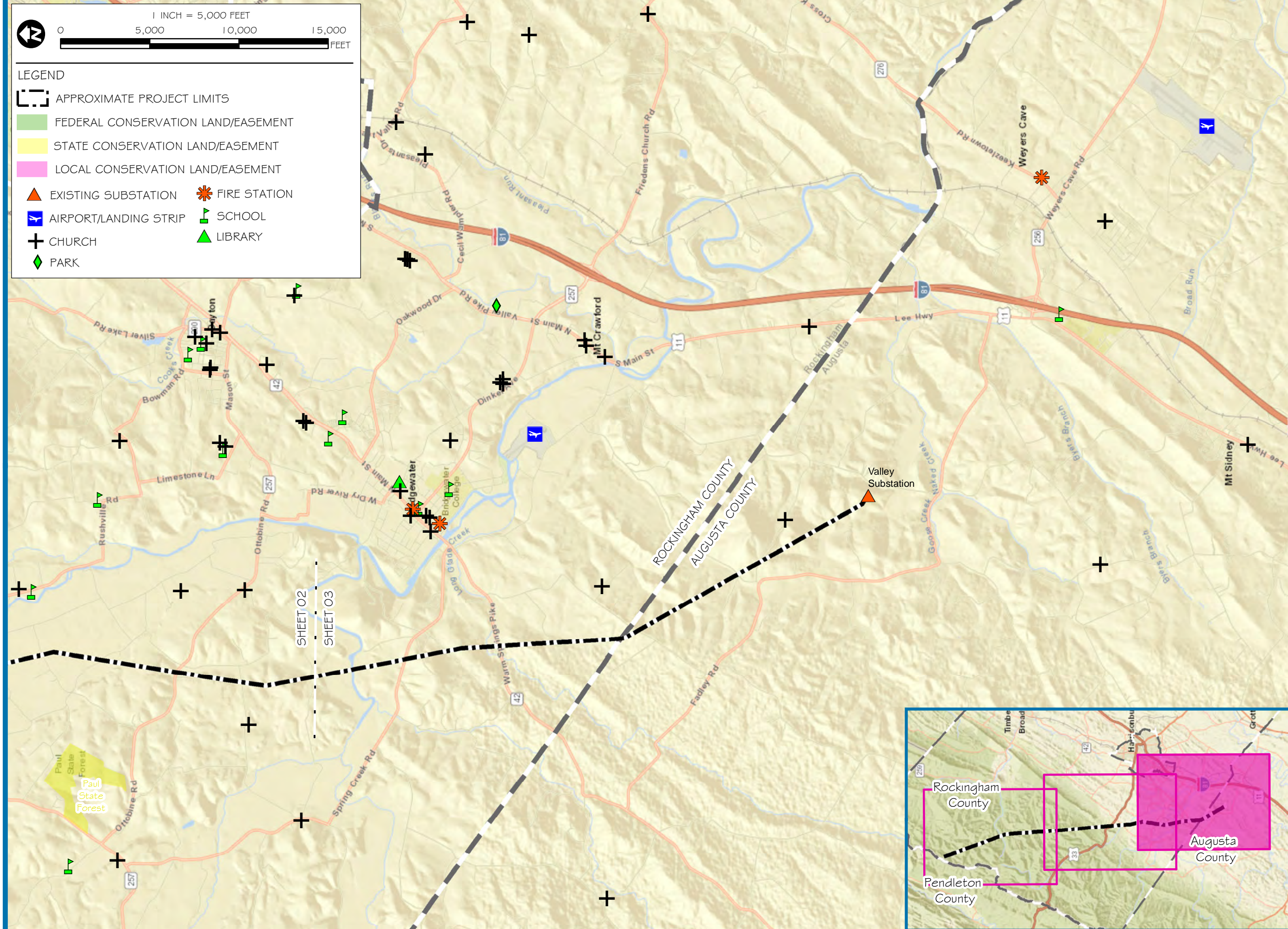
PROJECT MANAGER:	TL
DRAWN:	TB
JOB NUMBER:	5641.48
DATE EXPORTED:	07/27/2018
REVISIONS:	NONE

1 INCH = 5,000 FEET

0 5,000 10,000 15,000 FEET

LEGEND

- APPROXIMATE PROJECT LIMITS
- FEDERAL CONSERVATION LAND/EASEMENT
- STATE CONSERVATION LAND/EASEMENT
- LOCAL CONSERVATION LAND/EASEMENT
- EXISTING SUBSTATION
- AIRPORT/LANDING STRIP
- CHURCH
- PARK
- FIRE STATION
- SCHOOL
- LIBRARY



CORPORATE | 5020 MONTROSE BLVD., SUITE 650 HOUSTON, TX 77066
P: 713.520.5400
WWW.ORES.US

PROJECT: TL 550
APPLICANT: DOMINION

ENVIRONMENTAL CONSTRAINTS MAP

II.A.2

ROCKINGHAM AND AUGUSTA
COUNTIES, VIRGINIA

SHEET 03

PROJECT MANAGER:	TL
DRAWN:	TB
JOB NUMBER:	5641.48
DATE EXPORTED:	07/27/2018
REVISIONS:	NONE